

This Project

Spy Islands
S.I.D.

Oliktok Point
O.P.P.

ALASKA

Vicinity Map



Alaska State Plane: NAD83, Z.4

Acronyms:

1. B.O.P. = Beginning of Cross-Country Pipeline.
2. E.O.P. = End of Cross-Country Pipeline.
3. S.I.D. = Spy Island Drill Site.
4. O.P.P. = Oliktok Point Pad.
5. O.C.C. = Oliktok Construction Camp.
6. N.O.C. = Niikaichuq Operations Center.
7. K.P.L. = Kuparuk Pipeline.

Notes:

1. Maps shown as reference only and are not displayed at any specific scale.
2. C.P.A.I. Facility Names & Labels not shown for clarity.

POA-2005-1243; Beaufort Sea
Maintenance Dredging
ENI US OPERATING CO. INC.
January 18, 2011
Sheet 1 of 6

E.O.P. K.P.L. Tie-In Pad



us operating



DATE: 01/18/2011

Eni US Operating
Niikaichuq Development Project
Geographic Overview

DRAWING NO:

Eni-3269-d3

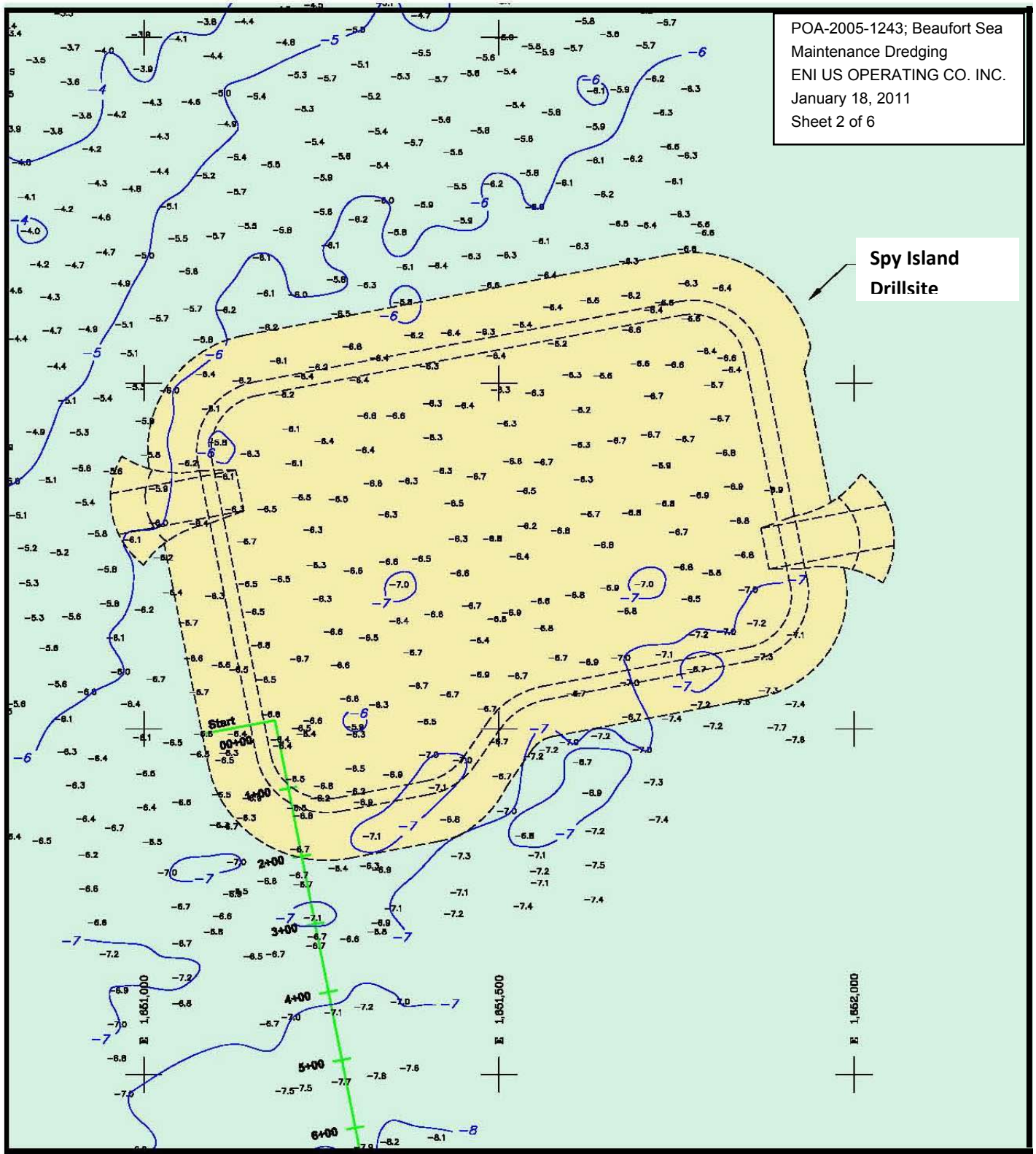
CAD FILE:

PART: 1 OF 1

REV: 0

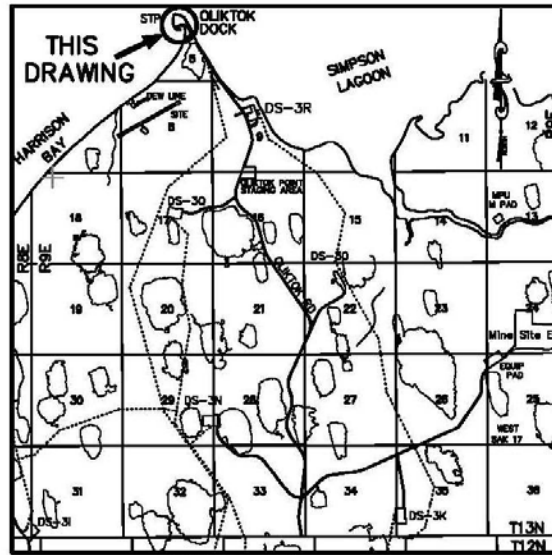
POA-2005-1243; Beaufort Sea
Maintenance Dredging
ENI US OPERATING CO. INC.
January 18, 2011
Sheet 2 of 6

Spy Island
Drillsite

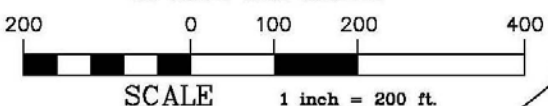
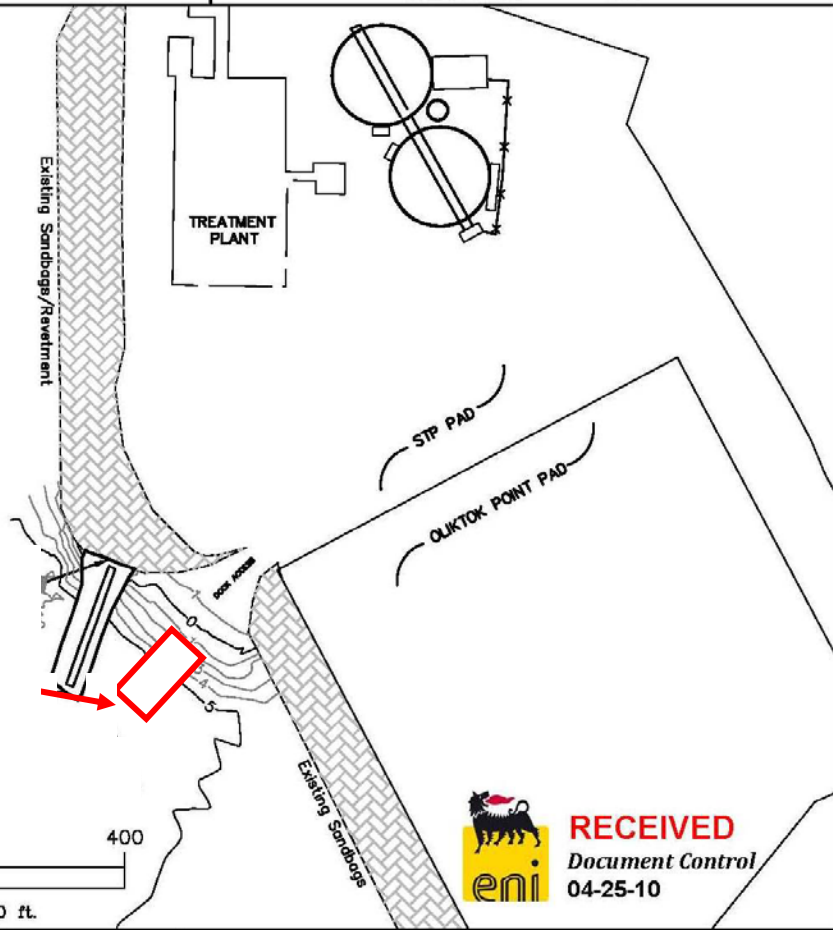


NOTES:

1. Geographic coordinates are NAD83.
2. Vertical Datum is BPMSL.
3. Date of Survey 23Apr10.
4. Survey performed using GPS RTK methodology, utilizing Topcon HiPer receivers.
5. Coordinates are derived from OPUS solutions of contractor's control monuments.
6. Jetty is constructed of stacked sandbags, typically 10.5'L X 5.5'W 2.5'H.
7. Footprint of jetty is approximately 165' X 45', as-built to outside visible toe of jetty.
8. Existing sandbags/revetment as shown at STP and OPP are from reference drawings. No field survey of existing conditions performed at this time.
9. Sea Floor contours are from previous survey, dated Dec. 2008. No bathymetry performed at this time.



HARRISON BAY



us operating



DATE: 4/24/10

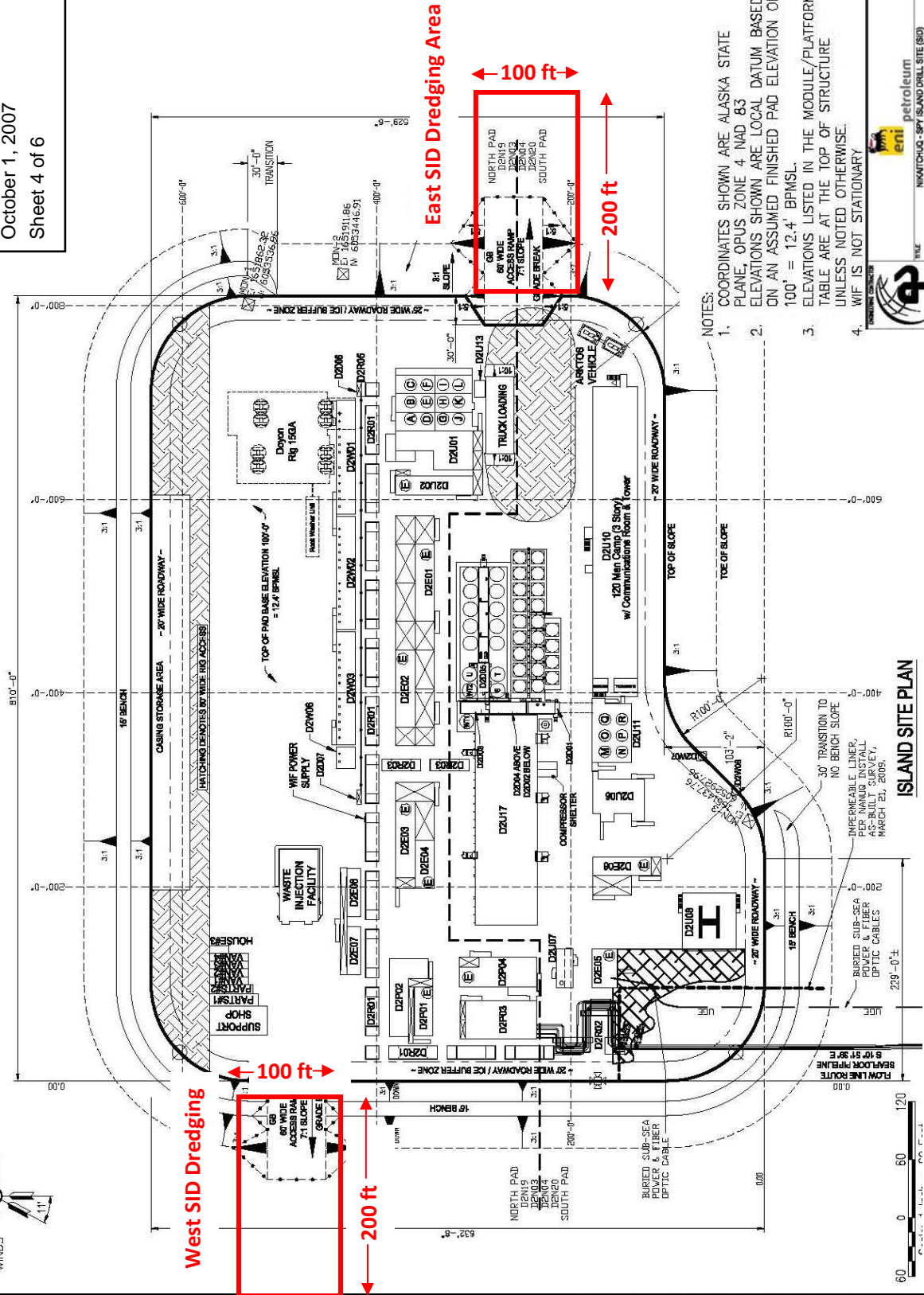
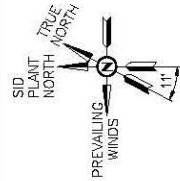
POA-2005-1243; Beaufort Sea
Maintenance Dredging
ENI US OPERATING CO. INC.
April 24, 2010
Sheet 3 of 6

DRAWING NO: Eni-3484-d12

CAD FILE: ENI3484D12

PART:	REV:
1 OF 1	0

POA-2005-1243; Beaufort Sea
 Maintenance Dredging
 ENI US OPERATING CO. INC.
 October 1, 2007
 Sheet 4 of 6

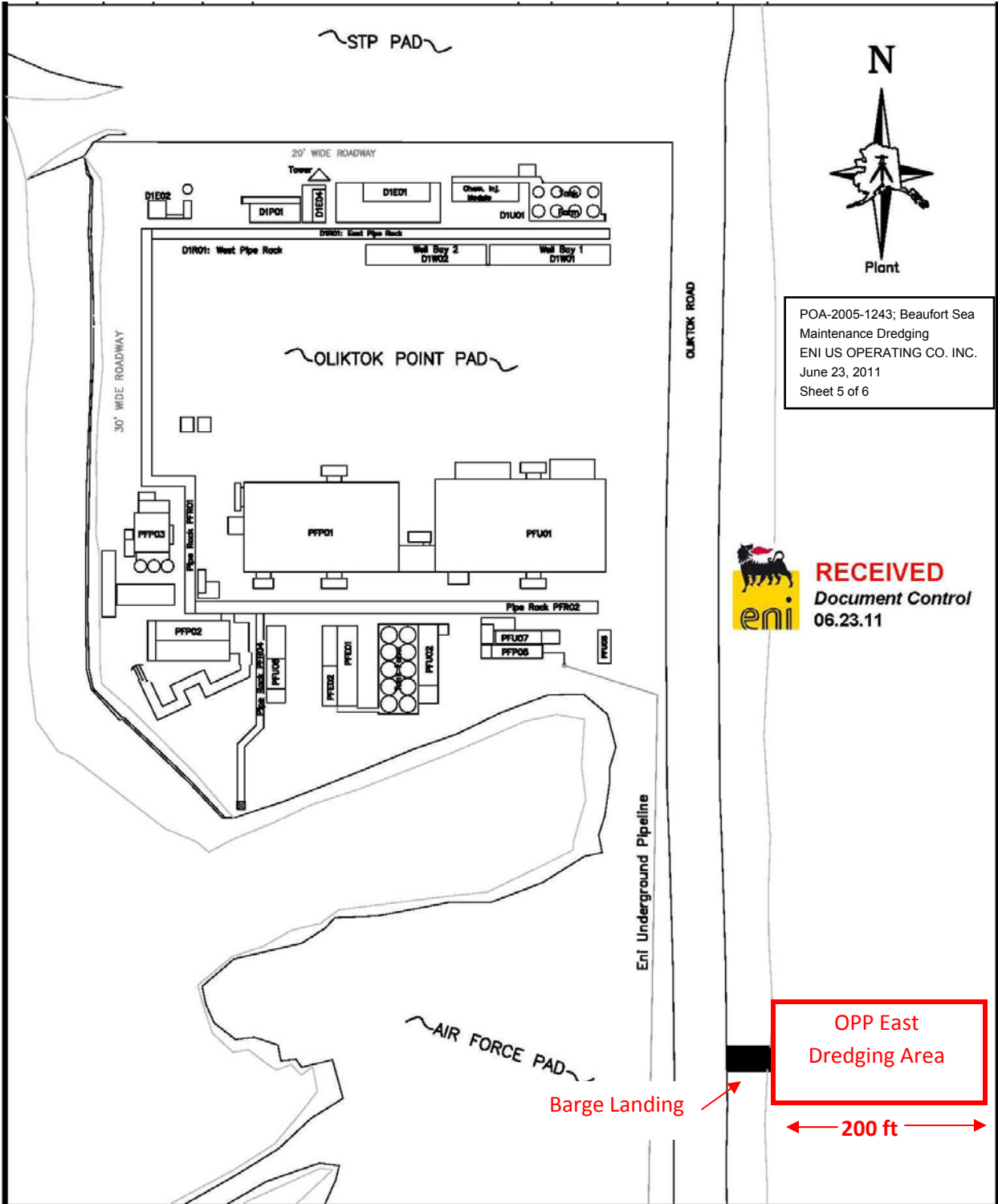


- NOTES:
- COORDINATES SHOWN ARE ALASKA STATE PLANE, OPUS ZONE 4, NAD 83
 - ELEVATIONS SHOWN ARE LOCAL DATUM BASED ON AN ASSUMED FINISHED PAD ELEVATION OF 100' = 12.4' BRMSL.
 - ELEVATIONS LISTED IN THE MODULE/PLATFORM TABLE ARE AT THE TOP OF STRUCTURE UNLESS NOTED OTHERWISE.
 - W/F IS NOT STATIONARY

petroleum
 ENI
 NIKATCHUKO, SPR ISLAND DRILL SITE (SIS)
 CIVIL - SITE PLAN
 OFFSHORE DRILLING FACILITIES
 DATE: 08/20/07
 DRAWN BY: J. FOSTER
 CHECKED BY: J. FOSTER
 PROJECT NO.: CE-D2400-0001-01

ISLAND SITE PLAN





POA-2005-1243; Beaufort Sea
 Maintenance Dredging
 ENI US OPERATING CO. INC.
 June 23, 2011
 Sheet 5 of 6



RECEIVED
 Document Control
 06.23.11

OPP East
 Dredging Area
 200 ft
 100 ft



us operating



DATE: 6/23/2011

Nikaitchuq Project
 OPP/SID
 Barge Landing Location

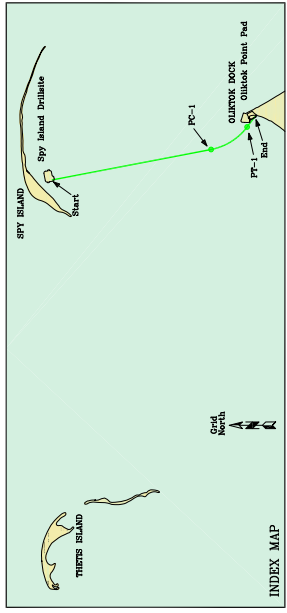
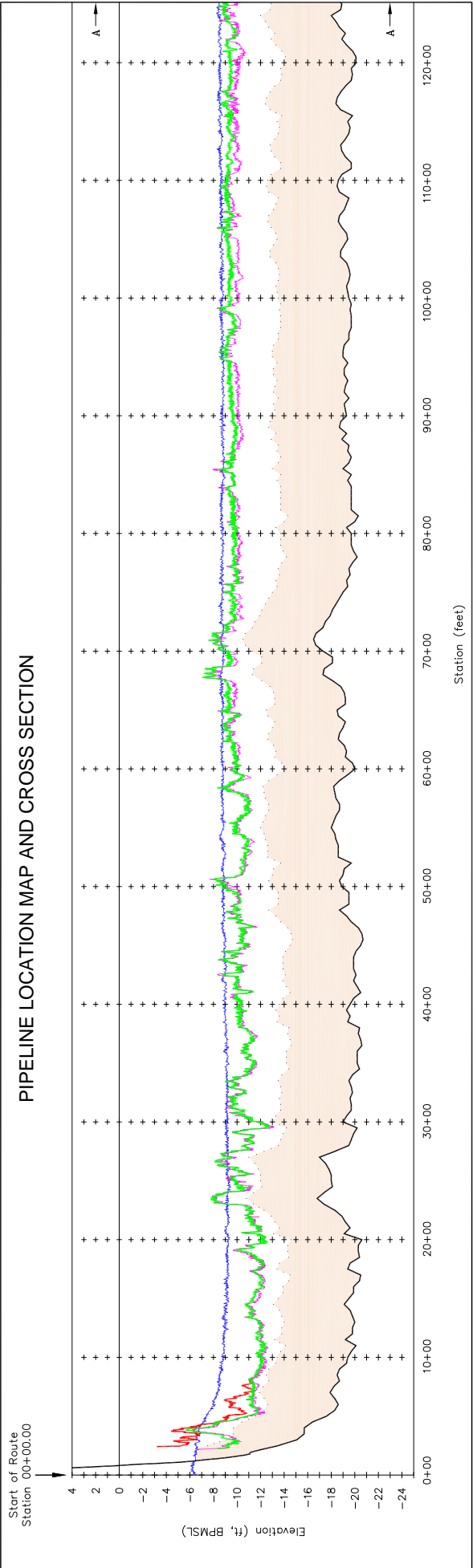
CAD FILE: ENI3484D38

DRAWING NO:

Eni-3484-d38

PART: 1 OF 1
 REV: 0

PIPELINE LOCATION MAP AND CROSS SECTION



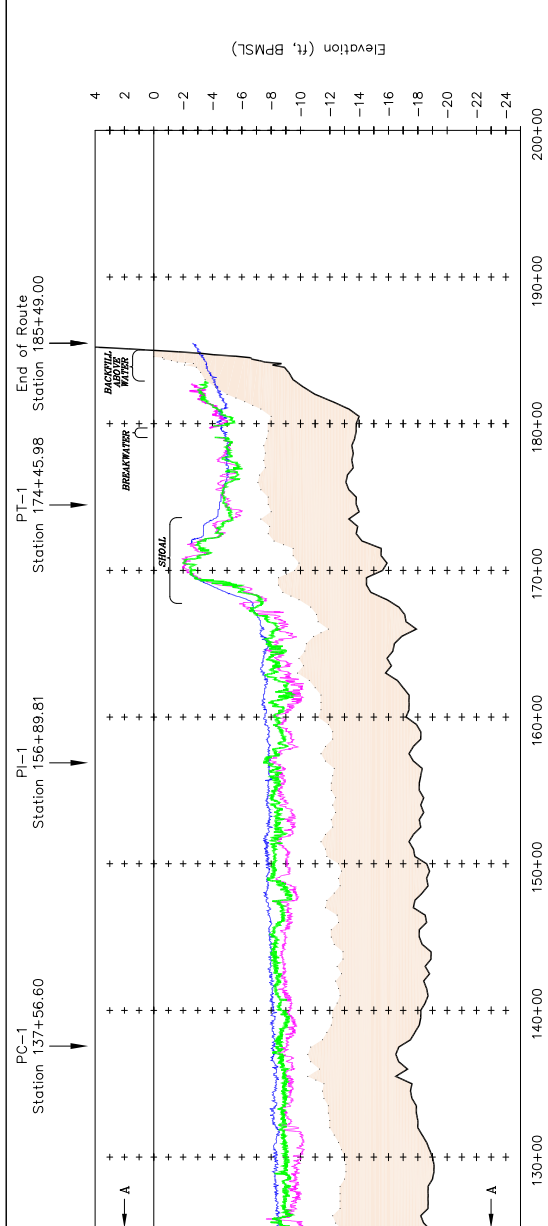
- NOTES**
1. First 2011 sea bottom survey performed between 28 July and 1 August 2011. Second 2011 sea bottom survey performed on September 28 (Post-Backfill Survey).
 2. 2010 sea bottom survey performed between 24 July and 1 August.
 3. 2007 sea bottom survey performed between 3 and 5 August.
 4. Top-of-pipeline-bundle survey performed on September 28, 2011.
 5. Bathymetric data originates from Oregon, marked as Oregon State Plane, NAD 83.
 6. Horizontal datum is Alaska State Plane Zone 4, NAD 83, expressed in U.S. Survey Feet.
 7. Vertical datum is 89 Mean Sea Level (BPM SL) expressed in feet.
 8. BPSLU has 0.58 ft above National Ocean Service Mean Lower Low Water (NOS MLLW).
 9. Vertical Scale is exaggerated by a factor of 100.
 10. Bathymetric data originates from Oregon, marked as Oregon State Plane, NAD 83.
 11. Pipeline alignment per Inter Engineering Drawing No. 1216601-005-DRW-00-001-C with As-Built Stamp dated June 4, 2009.

LEGEND

- 70+00
- 2011 Post-Backfill Sea Bottom Profile
- 2011 Pre-Backfill Sea Bottom Profile
- 2010 Sea Bottom Profile
- 2007 Sea Bottom Profile
- Top of Pipeline Bundle
- 6 Feet Above Top of Pipeline Bundle
- 6-Foot Minimum Backfill Thickness Specified in Pipeline Permit
- Matchline A

Scale: As Noted
 Date: 26 July 2011
 Prepared for: **Eni Petroleum**
 Prepared by: *Cinelli*
 Drawn by: GEH
 Sheet: 1 of 1
 Project: 19 January 2012
 Revision No.:
 CFC-898-01-002

Coordinates of Pipeline Alignment			
Description	Station	Northing	Easting
Start	137+56.60	6,035,749.00	1,651,174.54
PI-1	156+89.81	6,037,065.48	1,654,140.60
PT-1	174+45.98	6,038,445.78	1,655,987.59
End	185+49.00	6,035,762.00	1,655,370.03



POA-2005-1243; Beaufort Sea
 Maintenance Dredging
 ENI US OPERATING CO. INC.
 January 19, 2012
 Sheet 6 of 6